



LEADING THE WAY
ANNUAL REPORT 2016-2017

ACADEMIC PROGRAM HIGHLIGHTS

MSW

In the fall of 2016, 709 students enrolled in the MSW program, the largest class in U-M SSW's history. The Detroit Clinical Scholars Program, funded by a federal grant from the Health Resources and Services Administration (HRSA), addresses a critical need for more mental and behavioral health clinicians serving racial and ethnic minority children, adolescents and/or transitional age youth living in underserved, urban areas. In collaboration with the Detroit Wayne Mental Health Authority, SSW provides students with a specialized inter-professional behavioral health education and training program. Thirty Detroit Clinical Scholars graduated in December 2016 and 33 students will graduate in December 2017.

Joint PhD Program in Social Work and Social Science

The leadership of the PhD program transitioned from Professor Berit Ingersoll-Dayton to Associate Professor Daphne Watkins in January 2017. Through research and teaching Joint PhD students are tackling society's most pressing problems including poverty, homelessness, mental illness, violence toward children and addiction. Eight students defended their dissertations in the past year and seven already have academic positions. Doctoral students also authored or co-authored 21 scholarly publications and received more than 68 internal and external awards.

Undergraduate Minor - Community Action Social Change (CASC)

In collaboration with the University Musical Society CASC students in "Theories and Practices for Community Action and Social Change", discussed topics of community centered storytelling, theater based performance art, and social action. The Beyond Sacred: Voices of Muslim Identity explores the experiences of young Muslim New Yorkers who came of age in post-9/11 New York City at a time of increasing Islamophobia. CASC students were able to learn about the history of documentary theater and community-centered performance, and the application of community-based activism, and performance as a tool for social change.

Continuing Education

The Addictions Certificate Program was updated to a self-paced online learning experience. This 90-hour program is divided into three 30-hour tracks and meets educational requirements for the Michigan Certification Board of Addictions Professionals. It is open to MSW students and working professionals for social work continuing education hours. Since the format conversion, 141 participants have enrolled in the program, including 61 MSW students.

"The Detroit Clinical Scholars program provides training on how social work is a key player in an integrative care team. I have taken courses with doctors, dentists and pharmacists to learn how to coordinate care. I learned about Detroit, the needs of its populations and communities and how organizations are working together to integrate and improve both physical and mental health. This program has helped me identify my future direction as a social worker." Jetera Davis-Griggs, MSW '17, Detroit Clinical Scholar



A Message from the Dean

Dear Faculty, Students, Alumni and Friends of the University of Michigan Social Work,

I am delighted to present the University of Michigan School of Social Work 2016-17 Annual Report. The report is designed to communicate the activities and innovations of the School over the past year. It is designed to be data-based and to provide a sampling of our rich environment and our community's many innovations in educational programs, research and service.

The School community is in the midst of creating a strategic plan for the future of the SSW. This report represents a baseline of our performance, and some insights into the directions that our faculty, staff, students and alumni will pursue in the years to come. I am proud of the collective accomplishments of our School community and the extent to which they are guided by the deep diversity and social justice values that undergird our mission. I am honored and humbled to serve as dean at this great school in this great university.

I want to end with a special thank you to our generous donors. Many of the achievements presented in this report are directly due to your generous gifts. Your gifts support our students' accomplishments, faculty cutting-edge research and service to our community. With your support, we can reach our full potential for leadership, dedication to social good, and educational excellence that is accessible to an economically diverse student body. From the bottom of my heart, thank you for your support.

Go Blue!

Lynn Videka
Dean, University of Michigan
School of Social Work

UNIVERSITY OF MICHIGAN REGENTS
Michael J. Behm, Grand Blanc; Mark J. Bernstein, Ann Arbor;
Shauna Ryder Diggs, Grosse Pointe; Denise Ilitch, Bingham
Farms; Andrea Fischer Newman, Ann Arbor; Andrew C. Richner,
Grosse Pointe Park; Ron Weiser, Ann Arbor; Katherine E. White,
Ann Arbor; Mark S. Schlissel (ex officio)

INTRODUCING THE NEWEST MICHIGAN SOCIAL WORK FACULTY

SEPTEMBER 2017



Kathleen Doyle
Clinical Assistant Professor

Doyle served as the Executive Director of Ozone House Youth and Family Services and as LEO faculty at SSW. Doyle is a human services leader who brings innovation to her

work. She is interested in cultivating leaders in youth development and social justice.



William Elliott III
Professor

Elliott is a leading researcher in the fields of children's savings and college debt, with research interests focused on public policies related to issues of economic inequality

and social development. He founded the Center on Assets, Education, and Inclusion, which has served as the impetus for Children's Savings Account (CSA) programs and policies across the United States.



Daniel Fischer
Assistant Dean for Field Instruction and Clinical Assistant Professor

Fischer was an adjunct faculty member since 1993. He previously served in several roles at Michigan

Medicine, including Interim Director of Social Work and Pastoral Care, and Director of Child and Family Life, Spiritual Care Department, at the C.S. Mott Children's Hospital. Fischer has been at U-M since 1989, working as a clinician, teacher, researcher and administrator.



Odessa Gonzalez Benson
Transitional Postdoctoral Fellow September 9/1/2017 Assistant Professor 9/1/2018

Gonzalez Benson's research examines refugee resettlement policy and community practice with

refugees, focusing on labor equity and participatory approaches. Her work draws upon years of engagement with refugee communities and on social work practice with military families. Her personal path as a 1.5 generation immigrant informs her research, pedagogy and practice.



Shanna Kattari
Transitional Postdoctoral Fellow 9/1/2017

Assistant Professor 9/1/2018

Kattari's work currently centers on disabled people and ableism, and on transgender/gender

nonconforming identities and transphobia. Kattari uses an intersectional lens, examining health disparities within these communities. She values translational research and strongly believes in making research accessible to not only academics but also to society at large.



Matthew Smith
Associate Professor

Smith studies familial and environmental factors that contribute to recovery from severe mental illness. He is committed to improving the quality of life of persons with

disabilities, including schizophrenia and autism, by developing and evaluating treatments that enhance their capacity to remain engaged in the community through work and other activities.



Xiaoling Xiang
Assistant Professor

Xiang conducts community-based research concerning the physical and mental health and service use of diverse older populations. She is particularly interested in

psychosocial approaches to promoting mental health and enhancing quality of life in older adults. Her research also emphasizes strong partnerships with community organizations and interdisciplinary collaborations.

Thank you

for your passion and investment in the Victors for Michigan Campaign for Social Work. Your support will help us prepare the next generation of social work professionals to change the world.



**VICTORS FOR
MICHIGAN**

PRACTICE INNOVATION IN ACTION

FACULTY AND STUDENTS APPLY INNOVATIVE SOLUTIONS
TO SOCIETY'S MOST DIFFICULT CHALLENGES

Student Venture Awards

Three School of Social Work students were awarded funding in a U-M entrepreneurial competition.

THE EVERGREEN EXPERIENCE

Allison Ewert, MSW '16 and Erica Goble, MSW '19

The Evergreen Experience is a network consisting of individuals, organizations and resources that connects existing farms to older adults living with dementia. The team launched two sites this summer, with the goal of testing program activities, evaluating program outcomes and learning how best to engage older adults with gardening and farming.

INK'D

Charlie Brink, MSW '17

Many developing countries do not have the resources needed to identify perpetrators of sexual assault and bring justice to victims. INK'd aims to empower young women in Zambia by putting into the hands of women and girls a lost-cost, easy-to-use device that holds perpetrators of sexual assault accountable. Combined with education and awareness, the INK'd device sprays a semi-permanent ink onto perpetrators, allowing police to connect the perpetrator to the victim. The team surveyed girls, nurses and teachers who stated sexual assault was their most pressing health concern.

"I see the impact on the faces of the seniors when they arrive; in their eagerness to harvest kale—enjoying the farm and each other."

*Erica Goble, MSW '19
The Evergreen Experience*



Summer Youth Employment

SSW faculty Mat Despard, Adrienne Lapidos, Kristin Seefeldt, Luke Shaefer and Trina Shanks assisted with U-M Poverty Solutions Summer17, a summer youth employment program in Washtenaw County, which pairs county youth ages 16-24 with U-M faculty and staff to help them gain work experience, mentorship and life skills training.

The goal is to measure outcomes such as youth employee satisfaction, high-school completion, permanent employment outcomes, college or vocational training enrollment and changes in attitudes in the youth employee supervisors. The findings inform youth jobs programs developed by government agencies and other large company job sites.

"The Summer Youth Employment Program is a great example of a beneficial partnership between the Washtenaw County community and U-M, providing a runway to future job and academic success for young adults. It wouldn't have happened without the involvement of our School of Social Work partners."

Luke Shaefer, Associate Professor Of Social Work and Director, U-M Poverty Solutions



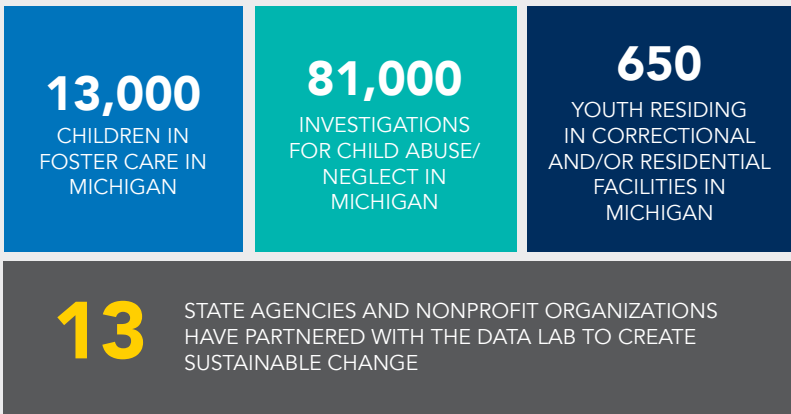


Child and Adolescent Data Lab

The SSW's Child and Adolescent Data Lab harnesses big data. The lab's analyses inform evidence-based decision making for policies and services that will improve outcomes for Michigan's vulnerable children, adolescents and their families. Directed by Associate Professors Brian Perron and Joe Ryan, the Data Lab partners with the State of Michigan to analyze data on health, child welfare, juvenile justice and educational systems.

“Big data plays an important role in shaping policy decisions. Through our partnership with the U-M Child and Adolescent Data Lab, we are able to tap into their resources and use big data to determine the most effective ways to move our state forward in a positive direction.”

Debora Buchanan, Director, Michigan Department of Health and Human Services Division of Continuous Quality Improvement



U-M and Grand Challenges

The Grand Challenges for Social Work is an initiative led by the American Academy of Social Work and Social Welfare. It is defining a bold, science and research-focused agenda aimed at improving individual and family well-being, strengthening our communities and creating a more just society.

The School of Social Work is a sustaining sponsor of the Grand Challenges and has faculty in key leadership roles:

- Professor Laura Lein, and Associate Professor Trina Shanks are co-leaders of the “Reduce Extreme Economic Inequality” challenge.
- Professor Michael Spencer is a co-leader of the “Close the Health Gap” challenge. He and Professor Brad Zebrack are members of the “Health Equity: Eradicating Health Inequalities for Future Generations” initiative within the health gap challenge.



U-M SCHOOL OF SOCIAL WORK BY THE NUMBERS



SSW STUDENTS GO GLOBAL

- AUSTRALIA
- BOTSWANA
- CHILE
- CHINA
- COSTA RICA
- ECUADOR
- GUATEMALA
- HONG KONG
- INDIA
- ISRAEL
- LESOTHO
- MONGOLIA
- MOZAMBIQUE
- NORWAY
- PERU
- PHILIPPINES
- SINGAPORE
- SOUTH AFRICA
- UNITED STATES - CALIFORNIA
- UNITED STATES - ILLINOIS
- UNITED STATES - MICHIGAN
- UNITED STATES - MISSISSIPPI
- UNITED STATES - WASHINGTON DC

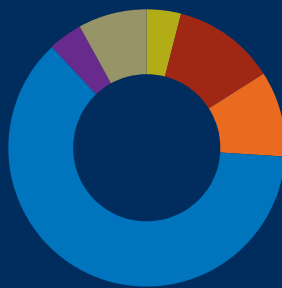
DIVERSITY

52%
PHD STUDENTS
OF COLOR



- Asian 15%
- Black 22%
- Hispanic 12%
- Native American 2%
- Pacific Islander 2%
- White 48%
- 2 or More Selected 0%

38%
MSW STUDENTS
OF COLOR



- Asian 4%
- Black 12%
- Hispanic 10%
- Native American .1%
- Pacific Islander 7%
- White 62%
- 2 or More Selected 4%

EMPLOYMENT

95%
2016 SSW GRADUATES
SEEKING EMPLOYMENT,
EMPLOYED AFTER
GRADUATION

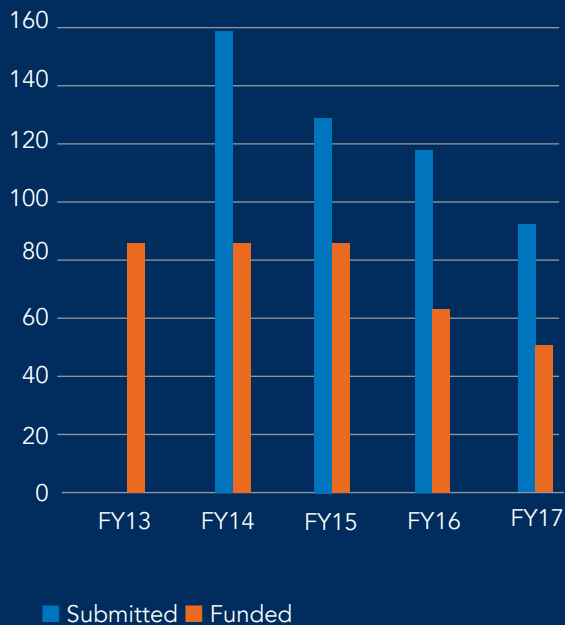
88%
PHD GRADUATES
ARE EMPLOYED

16,000
SSW ALUMNI
FORM A STRONG
NETWORK

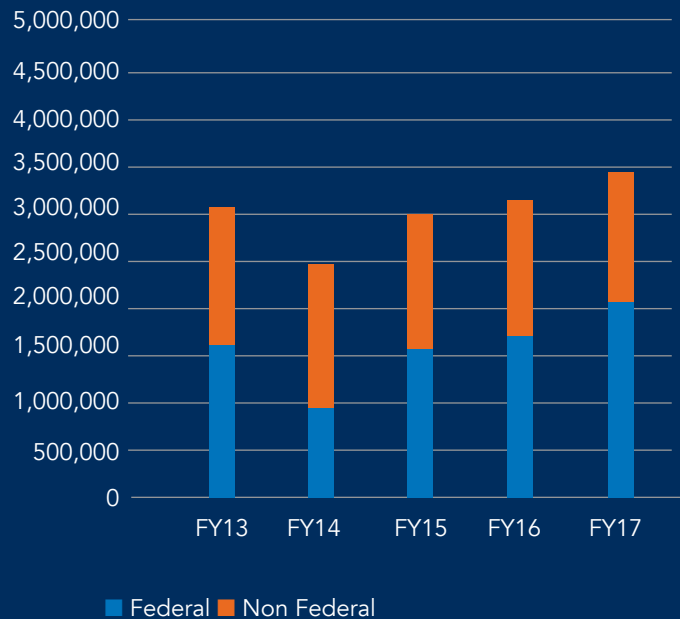
218 STUDENTS ARE THE FIRST IN THEIR FAMILY TO ATTEND GRADUATE SCHOOL
44 INTERNATIONAL PHD AND MSW STUDENTS FROM 17 COUNTRIES

RESEARCH

NUMBER OF PROPOSALS PER FISCAL YEAR



RESEARCH EXPENDITURES IN THOUSANDS (\$K)



TOTAL PROPOSAL COMPOSITION

SUBMITTED 2017



- NIH 24%
- Other Federal 12%
- Foundation 32%
- State, Corporate or Other External Sources 11%
- Internal University Sources 21%

FUNDED 2017



- NIH 11%
- Other Federal 15%
- Foundation 26%
- State, Corporate or Other External Sources 22%
- Internal University Sources 26%

21 PhD PUBLICATIONS
169 FACULTY PUBLICATIONS

SELECT FACULTY AWARDS

Linda Chatters was ranked number two in the top 20 of most cited African American scholars in social work.

Linda Chatters and **Lorraine Gutiérrez** ranked high impact female social work scholars, "Citation Impact of Women in Social Work: Exploring Gender and Research Culture"

David Córdoba was selected as a NIDA Diversity Scholar by the National Institute on Drug Abuse.

Jorge Delva accepted to the 2017-2018 New Leadership Academy Fellows Program.

Lorraine Gutiérrez was selected as a fellow of the American Academy of Social Work and Social Welfare. She also received the 2017 Teaching and Mentoring in Qualitative Inquiry Award from the American Psychological Association.

Shawna Lee and **Bradley Zebrack** were inducted in the 2017 Class of Fellows of the Society for Social Work and Research.

Luke Shaefer's book *\$2 a Day Living on Almost Nothing in America* was awarded the 2016 Hillman Prize for Book Journalism. He also was a torch recipient for the National Academy of Social Insurance.

Trina Shanks was ranked number 17 in the top 20 of most cited African American scholars in social work.

Robert Taylor was ranked number 1 in the top 20 of most cited African American scholars in social work.

Daphne Watkins was ranked number 18 in the top 20 of most cited African American scholars in social work.

2016-17 FACULTY

Cristina B. Bares, Assistant Professor of Social Work

James A. Blackburn, Research Scientist and Adjunct Professor of Social Work

Linda M. Chatters, Professor of Social Work; Professor of Health Behavior and Health Education, School of Public Health; Faculty Associate, Research Center for Group Dynamics, Institute for Social Research

Barry N. Checkoway, Professor of Social Work; Professor of Urban Planning, Taubman College of Architecture and Urban Planning

David Córdoba, Assistant Professor of Social Work

Susan K. Crabb, Field Educator, Lecturer IV

Sandra K. Danziger, Edith A. Lewis Collegiate Professor of Social Work

Jorge Delva, Kristine A. Siefert Collegiate Professor of Social Work; Director, Communities Engagement Program, Michigan Institute for Clinical & Health Research

Mathieu R. Despard, Assistant Professor of Social Work

Kathleen (Katie) Doyle, Clinical Assistant Professor

Ruth E. Dunkle, Associate Dean, Faculty and Academic Affairs and Wilbur J. Cohen Collegiate Professor of Social Work

Mary A. Eldredge, Field Educator, Lecturer III

William Elliott III, Professor of Social Work

Daniel J. Fischer, Assistant Dean of Field Education and Clinical Assistant Professor of Social Work

Larry M. Gant, Professor of Social Work; Professor of Art and Design, School of Art and Design

Karla Goldman, Sol Drachler Professor of Social Work; Professor of Judaic Studies, College of Literature, Science and the Arts

Andrew C. Grogan-Kaylor, Associate Professor of Social Work

Lorraine M. Gutiérrez, Director, Diversity, Equity, and Inclusion Program, and Professor of Social Work; Arthur F. Thurnau Professor, Professor of Psychology, College of Literature, Science, and the Arts

Karen S. Harlow-Rosentraub, Research Associate Professor

Barbara S. Hiltz, Clinical Assistant Professor of Social Work and MSW Program Director

Joseph A. Himle, Associate Dean for Research and Professor of Social Work; Professor of Psychiatry, Medical School

Berit Ingersoll-Dayton, Professor of Social Work

Edith C. Kieffer, Professor of Social Work

Sherrie A. Kossoudji, Associate Professor of Social Work; Adjunct Associate Professor of Economics, College of Literature, Science and the Arts

Adrienne L. Lapidos, Assistant Research Scientist and Adjunct Lecturer

Shawna J. Lee, Associate Professor of Social Work; Faculty Associate, Research Center for Group Dynamics, Institute for Social Research

Laura Lein, Katherine Reebe Collegiate Professor of Social Work; Professor of Anthropology, College of Literature, Science and the Arts

Lydia W. Li, Associate Professor of Social Work

Debra K. Mattison, Clinical Assistant Professor of Social Work

Jamie Mitchell, Assistant Professor of Social Work

Sandra L. Momper, Associate Professor of Social Work

Rachel T. Naasko, Field Educator, Lecturer III

Emily Nicklett, Associate Professor of Social Work

Robert M. Ortega, Associate Professor of Social Work

Brian E. Perron, Associate Professor of Social Work; Faculty Associate, Populations Studies Center, Institute for Social Research

Stacy L. Peterson, Field Educator, Lecturer IV

Rogério Meireles Pinto, Associate Professor of Social Work

Thomas J. Powell, Professor of Social Work

Daicia R. Price, Field Educator, Lecturer III

Beth Glover Reed, Associate Professor of Social Work and Women's Studies

Julie M. Ribaud, Clinical Associate Professor of Social Work

Katie E. Richards-Schuster, Director of Undergraduate Minor Programs and Assistant Professor of Social Work

Leigh A. Robertson, Field Educator, Lecturer IV

Lawrence Root, Professor of Social Work

Mary C. Ruffolo, Associate Dean for Educational Programs and Collegiate Professor of Social Work

Joseph P. Ryan, Associate Professor of Social Work; Faculty Associate, Center for Political Studies, Institute for Social Research

Daniel G. Saunders, Professor of Social Work

Sue Ann Savas, Clinical Assistant Professor of Social Work

Kristin S. Seefeldt, Assistant Professor of Social Work; Assistant Professor of Public Policy, Gerald R. Ford School of Public Policy

H. Luke Shaefer, Associate Professor of Social Work; Faculty Associate, Survey Research Center, Faculty Associate, Population Studies Center, Institute for Social Research; Associate Professor of Public Policy, Gerald R. Ford School of Public Policy; Center Director, U-M Poverty Center

Trina R. Shanks, Associate Professor of Social Work; Faculty Associate, Survey Research Center, Institute for Social Research

Beth A. Sherman, Clinical Assistant Professor of Social Work

Matthew J. Smith, Associate Professor of Social Work

Michael Spencer, Fedele F. Fauri Collegiate Professor of Social Work

Karen M. Staller, Associate Professor of Social Work

Robert Joseph Taylor, Harold R. Johnson Professor of Social Work, Sheila Feld Collegiate Professor of Social Work; Faculty Associate, Research Center for Group Dynamics, Institute for Social Research

Richard M. Tolman, Sheldon D. Rose Collegiate Professor of Social Work; School of Social Work, Research Professor, Center for Human Growth and Development

John E. Tropman, Henry J. Meyer Collegiate Professor of Social Work

William L. Vanderwill, Field Educator, Lecturer IV

Lynn Videka, Dean and Collegiate Professor of Social Work

Daphne C. Watkins, Director of Joint Doctoral Program, Associate Professor of Social Work; Faculty Associate, Research Center for Group Dynamics, Institute for Social Research

Addie Weaver, Assistant Professor of Social Work

Xiaoling Xiang, Assistant Professor of Social Work

Mieko Yoshihama, Professor of Social Work

Bradley J. Zebrack, Professor of Social Work