



SCHOOL OF SOCIAL WORK  
FIELD EDUCATION  
UNIVERSITY OF MICHIGAN

Michigan Medicine Field  
Placement Information Session  
Welcome!

September 3, 2025

# Agenda

- **Introductions**
- **Michigan Medicine Field Application Process**
- **Placing Timeline**
- **Considerations and Expectations**
- **What Michigan Medicine Offers to Students**
- **Social Work Roles and Field Placements Available for Winter 2026**
- **Keys to success**
- **Q&A**



# The Office of Field Education Team



**Christina Dadswell**  
Assistant Director  
(Residential)  
she/her



**Erin Khang**  
Director of Field  
Education  
she/ her



**Yanni Robinson**  
Assistant Director  
(Online)  
she/ her



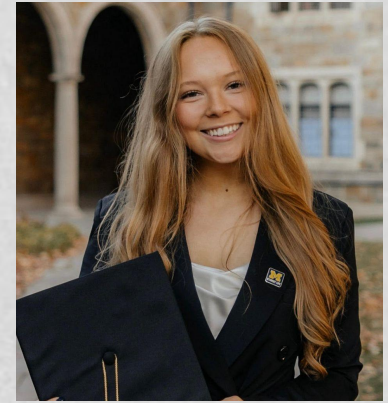
# The Office of Field Education Team



**Sara Castillo**  
Office Manager  
she/her



**Khindra Clarke**  
Program Assistant  
she/her



**Claire Peterson**  
Placing Coordinator  
she/her



# The Office of Field Education Team



**Amy Burandt**  
Field Faculty  
she/her



**Feyi Adunbi**  
Field Faculty  
she/her



**Miriam Connolly**  
Field Faculty  
she/her



# The Office of Field Education Team



**Rosalva Osorio Cooksy**

Field Faculty  
she/they



**Stacy Peterson**

Field Faculty  
she/her



**Zaynab Boussi**

Field Faculty  
she/her



# The Office of Field Education Team



**Mona Berry**  
Field Faculty  
she/her



**Rachel Naasko**  
Field Faculty  
she/her



# The Office of Field Education Team



**Aimee Vantine**  
Field Faculty  
she/her



**Talia Ingham**  
Field Faculty  
she/her



# Important Application Dates for students starting Field Winter 2026

**Michigan Medicine  
Information Session:  
9/3/25: 430-530 ET  
(Hybrid event)  
SSW ECC  
Zoom**

**Michigan Medicine  
Application  
Interest Form due  
9/7/25**

**Applications  
Open 9/8/25  
Due 9/11/25**

**Applications for All  
Opens  
September 15, 2025**

**Applications Due:  
September 26, 2025  
5p (ET)**

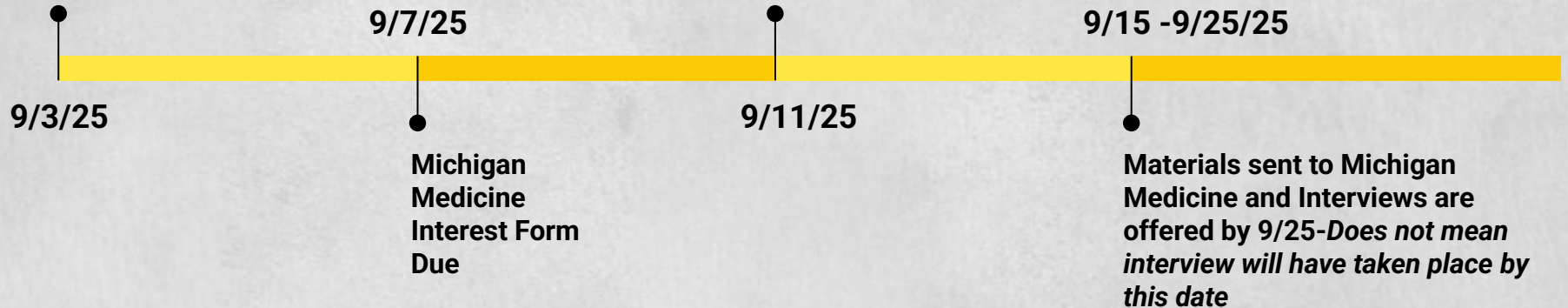


# Michigan Medicine Placing Timeline

Michigan Medicine Info  
Session  
In person: ECC  
Virtual: Zoom

Michigan Medicine  
Applications Due

Late applications will  
not be accepted



*Those not offered an interview or are not offered a placement will continue with the placing process*



# Michigan Medicine Application Interest Form

**Michigan Medicine  
Application Interest  
Form due 9/7/25  
@11:59p (ET)**

**Applications  
open 9/8  
Due 9/11/25**



# Have Your Goal Statement and Resume Ready

**Goal statement:** 1-2 page written statement that is shared with potential field placements to give them an idea of your knowledge, skills and interests

- Follow the [goal statement guidelines](#) to compose
- Feel free to reach out to the SSW Writing Skills/Study Skills coordinator: [SSW Writing Assistance](#)

**Resume:** Same as any other resume, but with any social work experience or skills emphasized

- **Please ensure you use your UMich email address on your resume.** This is how agencies/field instructors will contact you.
- The Office of Career Services (CSO) website has [resume guidelines and examples](#)



# What Happens After you Apply

*\*Please check your umich email regularly and ensure timely responses*

**Application review by  
UM Field Faculty connected  
to your first choice**

**Field Faculty may  
reach out with  
questions or  
suggestions based on  
the agencies you  
ranked.**

**Resume /  
Goal Statement  
Sent to Agency**

**Interview Offer or  
Decline**

**Placement Offer or  
Decline**

**Congratulations if  
offered!  
If you are not offered,  
field faculty will provide  
any feedback and  
connect regarding  
moving forward with the  
next available option.  
\*Your field faculty may  
change based on the  
agency you commit to**



# Considerations



# Michigan Medicine Student Expectations

- Michigan Medicine (MM) placements are not guaranteed
- All MM placements are being filled at the same time
  - Diversify your application selections
  - If very interested in Michigan Medicine specifically, consider a Macro option
- Placements are 24 hours/week
  - Will use elective credits for additional field hours
  - Will complete Out of Sequence Petition to account for schedule
- Placements are 3 consecutive semesters
  - 20 month students-Don't change schedule now, change if you get placed
- Student will participate in the Student Program
  - Meets on Thursday mornings in the Winter and Spring/Summer semesters
  - Meets on Tuesday mornings in the Fall semester
- Student will take SW 714 - IPE Team Based Decision Making course in the Winter semester





# Field Placement at Michigan Medicine

September 3, 2025





# What Do We Offer?

- Our placement at MM offers an array of didactic and hands-on experiential learning opportunities.
- Most importantly, our FIs (past and present) are the best and top-of-the-line instructors. Collectively, we have several decades of experience spanning psychotherapy, case management, private, medical, mental health, public health, research, management & leadership.
- Weekly Mentorship Courses
- Weekly Workshops and Seminars
- Clinical Skills Training Series
- Interprofessional Educational Experiences
- Social Justice Grand Rounds
- IPE Social Justice Grand Rounds
- All Women Are Leaders Series

# Inpatient Care Management Social Work

- Dual role consisting of clinical social work and discharge planning
- Function as a clinical member of the interdisciplinary team
  - Each unit in the adult and children's hospitals have an assigned social worker
  - Social workers staff the emergency department 24/7
  - Caseload and patient population varies by unit
    - General medicine, surgical, specialty care, and/or intensive care patient populations
- Complete biopsychosocial assessments to assess for psychosocial needs and barriers to care/hospital discharge
- Provide social work interventions throughout a patients' hospitalization

# Inpatient Social Work Role

- Substance use assessment/intervention
- Code Response
- Crisis Intervention
- Home Safety
- Suicide Risk Assessment
- End of Life and Hospice Placement
- Grief and Loss Support
- Intimate Partner/Domestic Violence
- Mental Health Concerns/Resources
- Homelessness/Housing Concerns
- Community Resources
- Legal/Custody Concerns
- Make-a –Wish, Rainbow Connections referrals (pediatric)
- Facility Placement
- Abuse and Neglect Concerns
- Financial Concerns
- Complex Adjustment and Family Adjustment
- Prescription Assistance
- Insurance Concerns
- Guardianship
- DPOA-HC and Advance Directives
- Transportation Needs

# General Medicine Units

- Encompasses a variety of patient populations and presenting medical concerns
  - Common social work interventions pertaining to substance use, mental health, homelessness, home safety, intimate partner violence, and behavioral concerns
  - Common SW-facilitated discharge plans include hospice care, long-term care and/or memory care, group home, and homeless shelters

# Surgical and Specialty Units

- Social work role is similar to general medicine with the addition of specialized services and programs related to these patient populations
- Includes services and populations related to:
  - Neurology/Neurosurgery
  - Otolaryngology
  - Cardiac Surgery and Cardiology
  - Ortho/Trauma Surgery
  - Hematology/Oncology
  - Pulmonary
  - Transplant

# Adult Ambulatory Psychiatry

- Areas of overlap:

- Interdisciplinary Teams
- Group Interventions

- Unique areas:

- Psychiatric assessments and diagnosis with DSM V
- Evidence based psychotherapy training with observation
- Therapeutic caseload of ~5 patients weekly
- Opportunities to participate in group therapy
- Case presentations and written formulation including psychotherapy documentation
- Area specializations include depression, anxiety, perinatal, crisis support clinic

# Adult Inpatient Psychiatry (9C)

- Areas of overlap

- Biopsychosocial Assessments
- Brief Therapeutic Interventions
- Work on interdisciplinary teams
- Care Coordination with treatment providers & support systems

- Unique areas

- Providing Psychoeducation to families about psychiatric diagnoses
- Facilitation of mental health court hearings
- On-site placement

# Adult Psychiatric Partial Hospitalization Program (9D)

- Areas of overlap

- Complete psychosocial intake and assessment.
- Conduct individual, brief interventions, and/or supportive counseling.
- Provide referrals and resources.
- Participate in multidisciplinary team meetings.

- Unique areas

- Conduct processing, psychoeducational, and DBT/CBT groups.
- Provide psychoeducation to families about psychiatric treatment.
- Follow patients for 10 in-person days of treatment.

# Child and Adolescent Ambulatory Psychiatry

- Areas of overlap:

- Interdisciplinary Teams
- Group Interventions

- Unique areas:

- Psychiatric assessments and diagnosis with DSM V
- Evidence based psychotherapy training with observation
- Therapeutic caseload of ~5 patients weekly
- Opportunities to learn about child development and family dynamics
- Case presentations and written formulation including psychotherapy documentation
- Area specializations include infant and early childhood, autism spectrum disorders, depression, anxiety, OCD, ADHD

# University of Michigan Addiction Treatment Services (UMATS)

- Areas of overlap:

- Interdisciplinary Teams
- Group Interventions

- Unique areas:

- Substance Use Disorder assessments and diagnosis with ASAM and DSM V
- Evidence based psychotherapy training with observation
- Therapeutic caseload of ~5 patients weekly
- Opportunities to participate in group therapy
- Case presentations and written formulation including psychotherapy documentation
- Area specializations include adolescent and adult, intensive outpatient program, early recovery program

# Hybrid and Macro Placements

- Michigan Medicine Comprehensive Gender Services Program
  - Michigan Institute for Clinical and Health Research
  - Michigan Medicine Turner Senior Wellness and Silver Club Programs
  - University of Michigan School of Dentistry
  - Michigan Medicine Palliative Care and Social Work Administration
- Hybrid and macro-based placements at Michigan Medicine offer unique opportunities for students looking to gain experience in areas of social work research, education, and program development. These placements also enable students to gain an understanding of how these areas interact in a health system to support patients and staff, as well as bring their own knowledge and experience to help advance the work being done in these areas.

# Keys to Success

- Commitment to learning.
- Seeking a diverse educational experience.
- Flexibility and ability to adapt to change.
- Professionalism.
- Regular and open communication with field instructor.
- Openness to new experiences and being willing to challenge yourself.

Questions?