

WELCOME TO THE
“ASK A CURRENT MSW STUDENT”
WEBINAR!



January 27, 2014

Session Housekeeping



Ashley Schwedt
Current MSW Student &
Grad Student Staff Assistant
in the Office of Student Services

How this works:

- Simply type your question into the “question box”
 - ▣ All questions will be responded to publicly unless you type “private” in front of your question in which case we will send you an individual response. No names are shown on the screen.
- You can send questions to a specific current student by just typing their name ahead of your question
- PowerPoint and chat log will be posted on the Prospective Student & Admitted MSW Students Facebook page



Join our Facebook page:

www.facebook.com/UMSSWProspective

Upcoming Events:



Virtual Open House — March 27, 12-1:30pm

- For more information and to register, visit

<http://ssw.umich.edu/events/list/2015/03/27/46518-virtual-open-house>

- You can also find it on our events website

<http://ssw.umich.edu/events>

Plan a Visit to the SSW

- <http://ssw.umich.edu/prospective/schedulevisit.html>

Current Student



Ashley Schwedt

Community Organization

Community & Social Systems

Minor: Management of Human Services

16 month

Graduate Student Staff Assistant, Student Services

Field Placement: University of Michigan

Spectrum Center

aschwedt@umich.edu

Current Student



Jessica Soja

Community Organization

Children & Youth

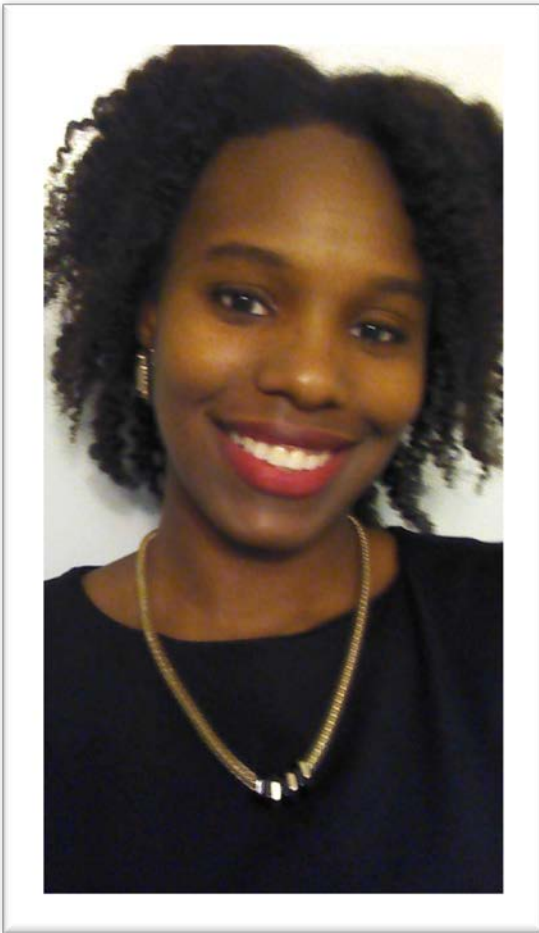
16 month

Graduate Student Staff Assistant, Career Services

Field Placement: SOS Community Services

jsoja@umich.edu

Current Student



Jewel Johnson

Interpersonal Practice

Children & Youth

20 month

Work-Study Student, Office of Student Services

Field Placement: Avalon Housing

johnsjew@umich.edu

Current Student



Lauren Tinaglia

Interpersonal Practice

Mental Health

16 month

Graduate Student Staff Assistant, Career Services

Field Placement: Community Action Agency's Early Head

Start Program

davislau@umich.edu

Current Student



Amanda Moore

Interpersonal Practice

Children & Youth

Minor: Management of Human Services

Advanced Standing

Graduate Student Staff Assistant, Career Services

Field Placement: POWER, Inc.

alucym@umich.edu

Please send us your questions now!

Current Students Available to Answer Questions:

Jewel Johnson

- ❖ Interpersonal Practice
- ❖ Children & Youth
- ❖ 20 month
- ❖ Veterans Affairs Hospital

Jessica Soja

- ❖ Community Organization
- ❖ Children & Youth
- ❖ 16 month
- ❖ SOS Community Services

Lauren Tinaglia

- ❖ Interpersonal Practice
- ❖ Mental Health
- ❖ 16 month
- ❖ Community Action Agency

Ashley Schwedt

- ❖ Community Organization
- ❖ Community & Social Systems
- ❖ Minor: Management of Human Services
- ❖ 16 month
- ❖ University of Michigan Spectrum Center

Amanda Moore

- ❖ Interpersonal Practice
- ❖ Children & Youth
- ❖ Minor: Management of Human Services
- ❖ Advanced Standing
- ❖ POWER, Inc.

Thank you for joining us!



We hope to see you soon!
GO BLUE!

Stay connected with us on our blog: umsswprospectivestudents.wordpress.com